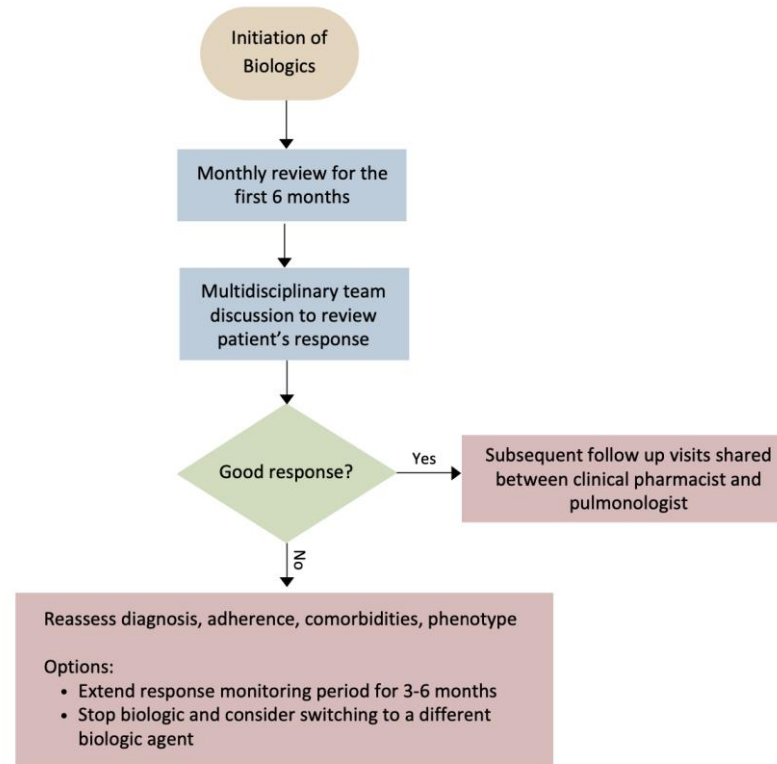


# Workflow For Monitoring Of Patients On Biologics



E.g. Patient on a 4-weekly dose regime with good response at 6 months after biologic initiation

Post biologic initiation (month)	0	1	2	3	4	5	6*	7	8	9	10	11	12
Asthma Control	√	√	√	√	√	√	√	√	√	√	√	√	√
Exacerbations and OCS use	√	√	√	√	√	√	√	√	√	√	√	√	√
Lung function	√			+/-			√						√
Biomarkers (BEC, FeNO)	√			+/-			√						√
Pulmonologist	√	√	√	√	√	√	√			√			√
Pharmacist	√			√			√	√	√		√	√	
Asthma Nurse (and visits in between if dosing is 2 weekly)	√	√	√	√	√	√	√	√	√	√	√	√	√

\*Multidisciplinary team discussion after 6 months of biologic therapy to assess patient's response

**Abbreviations:**

OCS: Oral corticosteroid

BEC: Blood eosinophil count

FeNO: Fractional Exhaled Nitric Oxide